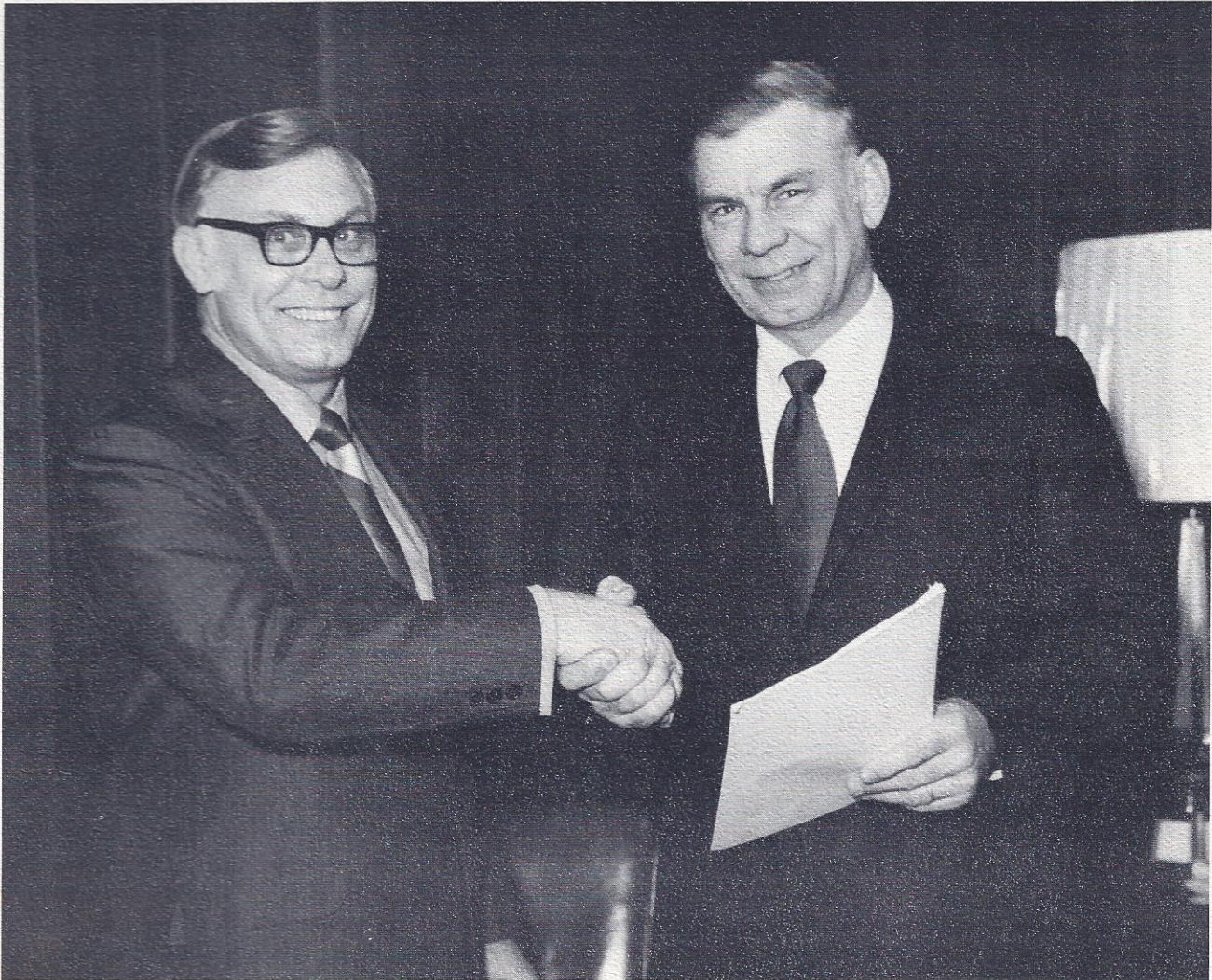


HAHN, INC.

NEWSLETTER

Vol. I, No. 1
January 29, 1971



Pictured above are Lloyd and Jack Hahn on December 17, the day of the re-acquisition!

A word from Lloyd....

"Needless to say.....it's good to be back!

"I want to particularly thank all of you who wished us well during the period of negotiations.

"We have some tough sledding ahead, but with the spirit that prevails now, we will get the job done!"

A word from Jack....

"After months of negotiation and a difficult time for all of us, we can now get down to work and, together, make Hahn, Inc. a good place to work.

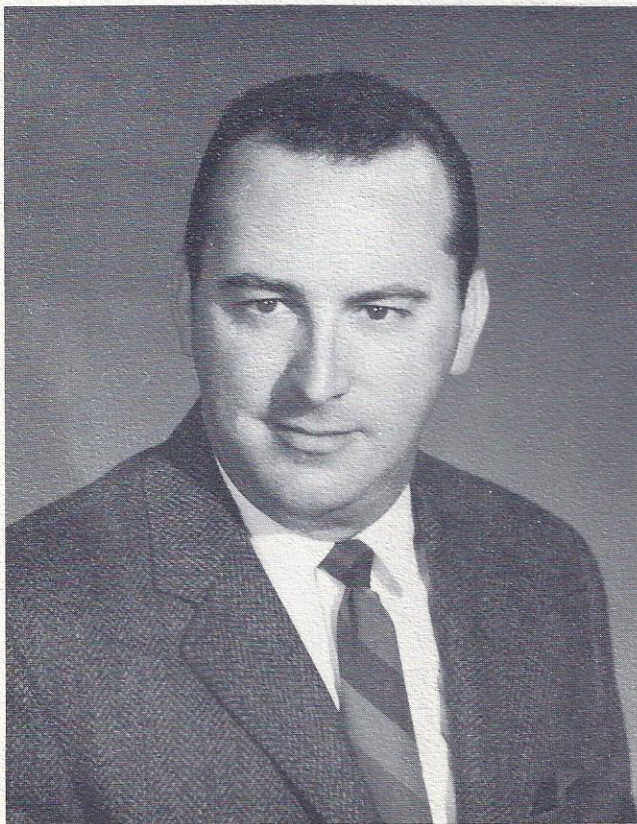
"To achieve the success we hope for, it is going to require utmost cooperation from all of you. We are looking forward to working with you and the profitable future we foresee."



Kenneth Bradfield



Clarence Owens



Charles Sorenson

Kenneth Bradfield was promoted to **MARKETING MANAGER, AGRICULTURAL PRODUCTS**. "Brad" joined Hahn in 1951 and is a recognized authority in the agricultural, chemical and fertilizer fields. Since joining Hahn, he has served in several capacities in the marketing area. Brad and his wife, June, have two children.

Clarence Owens began his career with Hahn in 1961 as Chief Industrial Engineer. This experience, plus the experience of being Plant Manager, gives him the background to assume his new responsibility as **DIRECTOR OF MANUFACTURING**. Clarence has four children and his wife, Kathy, is known to all of us due to her work in Hahn-Eclipse Marketing.

Charles Sorenson began work at Hahn as a co-op student while obtaining his B.S. degree in Mechanical Engineering from the University of Evansville. His experience and technical ability will be of great value to Hahn in his new position as **DIRECTOR OF ENGINEERING**. He and his wife, Sharon, reside in St. Phillips.

Leamon Williams has been promoted to SPECIAL ASSISTANT TO EXECUTIVE VICE PRESIDENT, reporting directly to Jack Hahn. He joined Hahn in 1956 and has made major contributions in numerous areas of the company. Leamon, his wife, Rosie, and their three children reside in Newburgh, Indiana.



Leamon Williams



Bob Werne

BOB WERNE, MATERIALS MANAGER, has the numerous responsibilities of managing Production Control, Scheduling, Purchasing, Traffic, Shipping and Receiving. Bob joined Hahn in 1968 and recently earned his Master's Degree in Business from Indiana State University. JOE MATTINGLY has been promoted to PRODUCTION MANAGER and will be in charge of the entire production operations. Joe joined Hahn in 1968. WALTER BESHEARS joined Hahn in 1962 as a machinist and worked himself up through the ranks to his new assignment, PRODUCTION SUPERINTENDENT, FABRICATING DEPARTMENTS. HUBERT CLARK has been promoted to PURCHASING SUPERVISOR and will assume total responsibility for the coordination of all facets of the purchasing function and supervision of all personnel assigned to the department. Hubert has been with Hahn since 1968.



Joseph Mattingly



Walter Beshears



Hubert Clark

Upon re-acquisition of HAHN, INC., Lloyd and Jack received numerous letters from people all over the country congratulating them. We thought you'd be interested to see what some of our distributors had to say.....

Willey McLellan, Canada

"May God bless you with the same foresight and enthusiasm you gave to Hahn, Inc. in years past."

Lakeshore Equipment & Supply Co., Cleveland

"We are glad to see competent, experienced management in charge again...sounds like you have a real tough cookie to handle."

Greenlands, New Hampshire

"Congratulations! You can expect 110% cooperation from Greenlands and its dealers."

West Point Industries, California

"We congratulate you on your recent achievement and certainly wish you all the good fortune and luck in the world!"

ABOUT YOUR INSURANCE.....

by Rosie Roehm

It's time to get organized for best results at the end of the year for your medical expenses that might occur.

What is deductible? (1) Charge of the doctor for an office visit that is not a routine physical. (2) Any medicine that has a prescription number on it. Keep the drug store slip or envelope that has patient's name, date, prescription number, doctor's name and amount. A cash register receipt cannot be used.

It doesn't take long to spend \$100. This is the amount each person in a family must pay out before any amount of refund can be realized from our insurance coverage.

Another expense you will pay that is applied to the \$100 deductible are charges in the hospital emergency room that are not "surgical", such as abdominal pain, temperature, back pain, chest pain. Any charges of x-ray tests or lab. tests will be paid up to \$50 a year for one person.

Perhaps it would be helpful to keep an envelope for each member of the family with the name on the outside to keep all bills separate. Which-ever member of the family doesn't spend \$100 in the year.....has a special blessing of good health.

Kromer Co., Minnesota

"I am sure this must be a feeling of great satisfaction to you to again be the top men in your organization and to control the company you were responsible for developing from a small sprayer manufacturer."

Garden Equipment Co., California

"We are particularly pleased to know you and Jack are at the helm of your company again."

Rose Seed Co., Mississippi

"Every good wish for continued growth and success."

Goldthwaite's of Texas, Inc., Ft. Worth

"Our best wishes to your organization for a profitable future. We plan to do our part in making this come true."

NEWSLETTER PLANS!!!!!!

A monthly newsletter like this one is being planned for distribution to all Hahn employees. Reporters for each area of the company will be assigned. Plans include news on the business aspects of the company, as well as featuring employees each month, and including news on special trips, new babies, new employees, etc.

We'd like your suggestions on a name for our newsletter....we've thought of HAHN HI-LIGHTS or HERE'S HAHN. Write a note with your suggestion and your name on it and give it to Bill Bridge or Ginny Whittinghill... ..if your suggestion is chosen, we'll feature YOU in our next issue!

Newsletters can be a lot of fun. We hope everyone will want to participate. Any suggestions you may have on the success of this venture will be appreciated.

We apologize to those individuals who recently received promotions and are not pictured in this month's newsletter. We had only so much space and were forced to feature those promotions announced first. If the newsletter is as effective as we hope, everyone will be featured at some time.