



# Hahn

Volume I, No. 22

March 1, 1974



# HI-SPOTS



## TURF SERVICE SCHOOLS

The Turf Products Division for the first time had a Service School to teach representatives across the nation how to service Hahn and Ransomes Turf Maintenance Equipment.

Fourteen people from nine distributorships attended the week of January 21, 22, and 23. Those attending came from the territories of Mike Eason and Wade Stith, Regional Sales Managers.

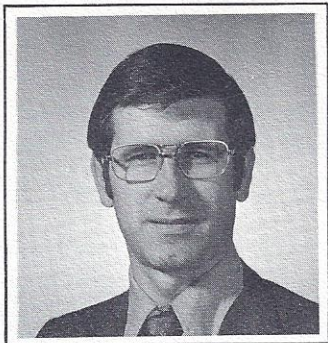
Twenty-two men from thirteen distributorships came to the second session, January 28, 29, and 30. These men came from the midwest and east coast, territories of Harry Dawson and Mike Riley, Regional Sales Managers.

Mr. Ray Storti, Marketing Manager of the Turf Division organized the Service Schools with the able assistance of Mr. Vollie Carr, Service Manager and Mr. Stan Hahn, Sales Trainee.

One highlight of the meeting was the presentation of the Ransomes 5/7 by Mr. Eric Ramsey, from Ransomes of Ipswich, England.

We've received numerous letters from people who attended the sessions saying that they sure learned a lot and felt the Schools were certainly worthwhile.

## NEW EMPLOYEES



Mr. Harry Tate started employment with Hahn on February 25, 1974 as Director of Industrial Relations, reporting to Mr. Jack Hahn.

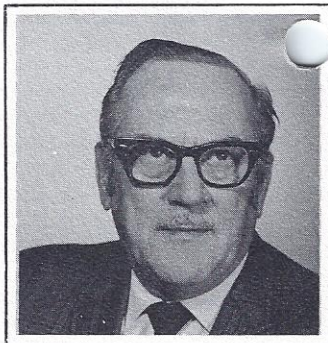
Mr. Tate is a native of Henderson, Kentucky and a graduate of Western Kentucky State University. He was formerly with Franklin Electric Company of Little Rock, Arkansas as Director of Industrial Relations. His wife, Jan, and their two children are still in Arkansas, but plan to move to this area in the near future.

Mrs. Beverly Hilgeman joined the Company to work in Graphics. She is a graduate of North High School and has attended the University of Evansville studying Journalism. Beverly was formerly with Finke's in their Advertising department. She and her husband reside in Evansville.



Mr. Neville Martin has taken the position of Purchasing Agent reporting to Mr. Hubert Clark. He was formerly with the Nicholson & Sons Co. of Evansville as Manufacturing Representative. Presently attending the University of Evansville Neville and his family reside in Washington, Indiana but plan to move to Evansville soon.

Mr. Albert Keller recently came out of retirement to work with Hahn for a few months as Supervisor of the F-600 Ag Project. He was formerly in Production Supervision with Whirlpool for many years and retired from there in 1972. Presently, he is working with Mr. John Gore in the AG Production area.



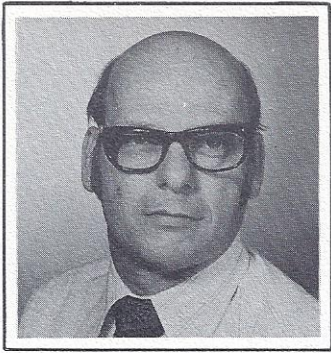
Mrs. Bernice Montgomery will be joining Hahn as Industrial Nurse replacing Mrs. Bedie Newman who resigned. Mrs. Montgomery is a graduate of Deaconess Hospital School of Nursing and formerly worked as a Rehabilitation Specialist for International Rehabilitation Associates. Bernice and her family live in Owensville, Ind.



Pictured above is our booth at the recent Golf Course Superintendents Show which was held in Anaheim, California February 10th thru 15th. This show is the largest Turf convention in the US where Turf Equipment Manufacturers come each year to display their equipment to dealers

and distributors from all over the world. There were approximately 5,000 persons in attendance.

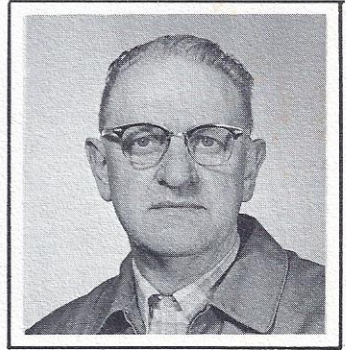
The Hahn booth was crowded most of the time because there was a lot of interest in our Turf Products.



## Familiar Faces in new places

◀ A former Hahn employee, James E. Wolf, returned to the Company to work as Industrial Engineer for Mr. John Stockton, and we are glad to have him back with us. He and his family reside in Evansville.

Mr. Harry Pfingston, a retired Hahn employee has returned to work with us for a few months as General Foreman of the third shift. ▶ Harry originally started with Hahn in March of 1967 as Foreman of the Press department and retired February, 1973. We certainly appreciate his help during this busy time.



## NAMES in the NEWS



Hahn received an Honorable Mention Award in the Industrial Grounds Beautification Program sponsored by Operation City Beautiful of the Metropolitan Evansville Chamber of Commerce.

Forty-eight firms throughout Evansville were judged on the design and general appearance of the grounds surrounding

their buildings. At a recent recognition dinner, a framed award was presented to Hahn in honor of their achievement.

Tom Hammer and the employees of his department are to be congratulated for the work they do in maintaining our grounds. Pictured above with Tom are Oliver Rettig and Ray Thomas.

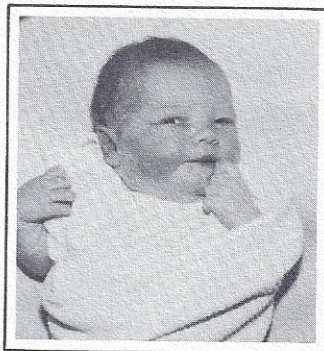
# buy'n r sellin'

FOR SALE...1963 Chevrolet Impala S.S. Power Steering & Brakes. Body above average, Interior excellent. Interested parties contact Michael Ellis, store-keeper, 2nd shift or call 826-5742 before 2:00 p.m.

For Sale...23" Color T. V. Recently rebuilt; contact Mr. Bob Schmitt at 280 or 424- 7125.

WANTED...Repair Work on Automobiles. Car repairs at very low prices! Most anything repaired in one day. See Bill Vincent in Parts dept or phone 426-2519.

# congratulations



Dick Williams, Department 21, and his wife are the proud parents of a new daughter, Julie Rae who was born February 10th, weighing 8 lbs-6 1/2 ozs.

Michael Ellis, Department 21, and his wife are the proud parents of a new daughter. Born on February 11th, at Henderson Hospital, Shannon Nicole weighed 8 lbs-7 1/2 ozs.

## SAFETY RECORD

OUR SAFETY RECORD DID NOT IMPROVE LAST MONTH! INSTEAD, WE HAD A "WHOPPING" INCREASE OF 74 ACCIDENTS OVER THE PRIOR MONTH, AND 5 OF THOSE ACCIDENTS WERE LOST TIME INJURIES! HERE IS THE JANUARY SCOREBOARD....

<u>DEPT</u>	<u>NO. ACCIDENTS</u>	<u>DAYS LOST</u>
1-Press Shop	18	3
2-Welding	45	2
3-Hi-Boy Assy	5	0
4-Assy Packing	3	0
5-Paint Dept	21	0
6A-Machine Shop	7	0
6B-Machine Shop	72	2
6C-Sub Assembly	54	0
7-Final Assembly	31	0
21-Material Handling	13	0
22-Shipping & Rec.	1	0
23-Quality Control	6	1
24-Maintenance	7	0
25-Tool Room	3	0
30-31-Engrg Model Shop	4	0
32-33-Parts Dept.	3	0
35-Custom Products	-0-	0
36-Building & Grounds	1	1
37-Truck Drivers	-0-	0
2600(Office)	1	0

## Pushing HAHN Products Makes Good Cents

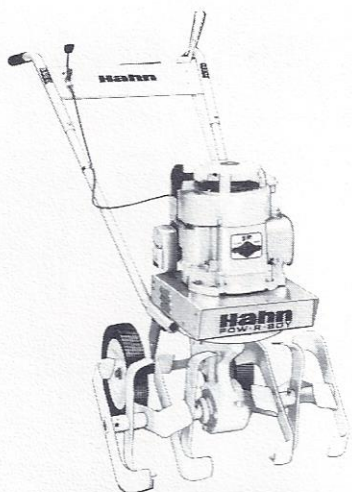
25% EMPLOYEE DISCOUNT...

Spring's just around the corner and it's time to think about lawns or gardens. Remember, Hahn employees may purchase Outdoor Products equipment for their own use from any Hahn dealer in Evansville, at a 25% discount. Slips for the discount may be picked up from the Outdoor Products Sales office or from Hahn - Eclipse Factory Store.

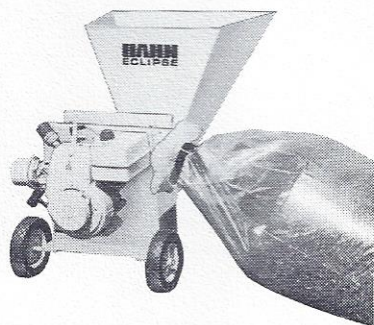


Pow-R-Pro mowers  
comply with all  
ANSI safety  
standards.

**powered for toughest mowing**



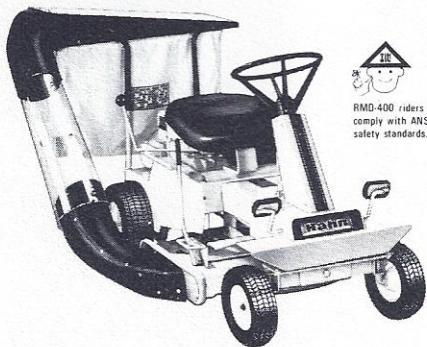
Make gardening fun again  
with a Pow-R-Boy™ tiller.



**HAHN COMPOST  
SHREDDER GRINDER**

Hahn is introducing the compact RMD-400 Rider for the economy minded customer who wants to step up from a walking power mower.

The RMD-400 will include two models in 26" mower width and powered with 5-horsepower Briggs & Stratton engines, one recoil and one electric start with a 12 volt battery. Features of the RMD-400 include 5-Speed Transmission for shifting while "On-The-Go", parallel bar mounting of mower housing with anti-scalp skids for level cutting on uneven terrain and geared reduction steering wheel with 26" turning radius. The incomparable Hahn "Catchmaster" rear mount grass catcher optional attachment performs superbly on the RMD-400.



RMD-400 riders  
comply with ANSI  
safety standards.

# management memo

## PROCESSIONARY CATERPILLARS

Processionary Caterpillars feed upon pine needles. They move through the trees in a long procession, one leading and the other following--each with his eyes half closed and his head snugly fitted against the rear extremity of his predecessor.

Jean-Henri Fabre, the great French naturalist, after patiently experimenting with a group of the caterpillars, finally enticed them to the rim of a large flower pot. He succeeded in getting the first one connected up with the last one, thus forming a complete circle, which started moving around in a procession, with neither beginning nor end.

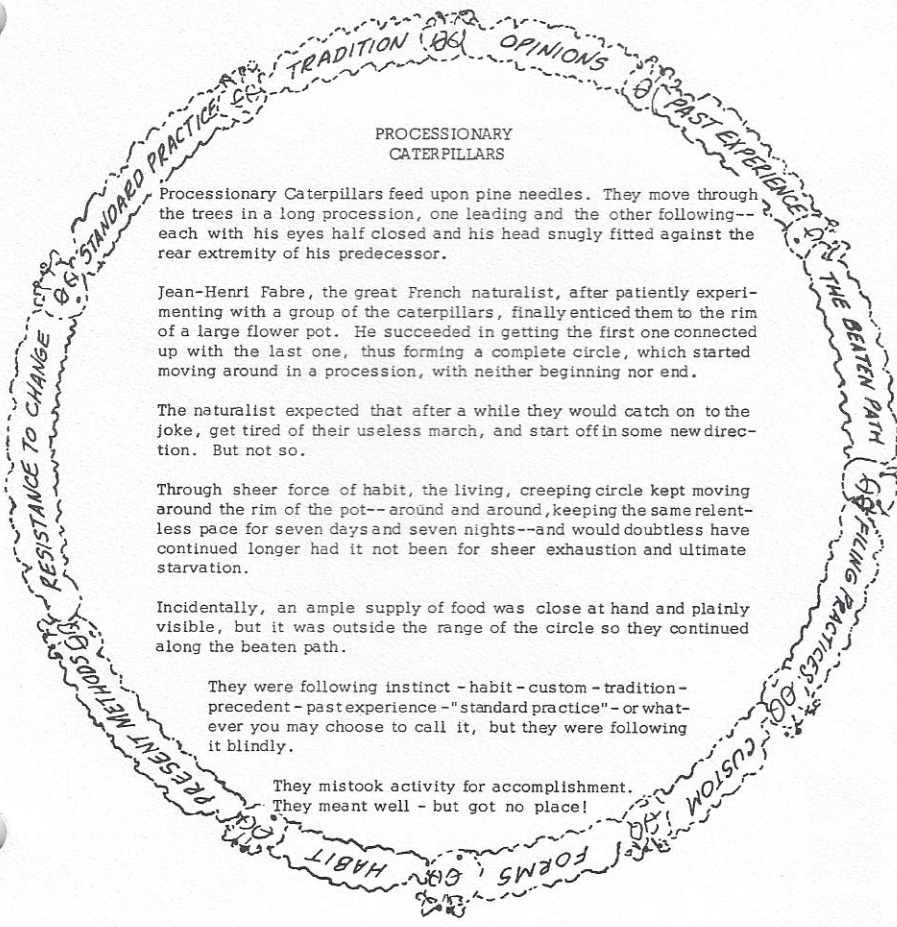
The naturalist expected that after a while they would catch on to the joke, get tired of their useless march, and start off in some new direction. But not so.

Through sheer force of habit, the living, creeping circle kept moving around the rim of the pot--around and around, keeping the same relentless pace for seven days and seven nights--and would doubtless have continued longer had it not been for sheer exhaustion and ultimate starvation.

Incidentally, an ample supply of food was close at hand and plainly visible, but it was outside the range of the circle so they continued along the beaten path.

They were following instinct - habit - custom - tradition - precedent - past experience - "standard practice" - or whatever you may choose to call it, but they were following it blindly.

They mistook activity for accomplishment.  
They meant well - but got no place!



# Hahn

Hahn, Inc., 1625 N. Carvin • Evansville, Indiana 47717